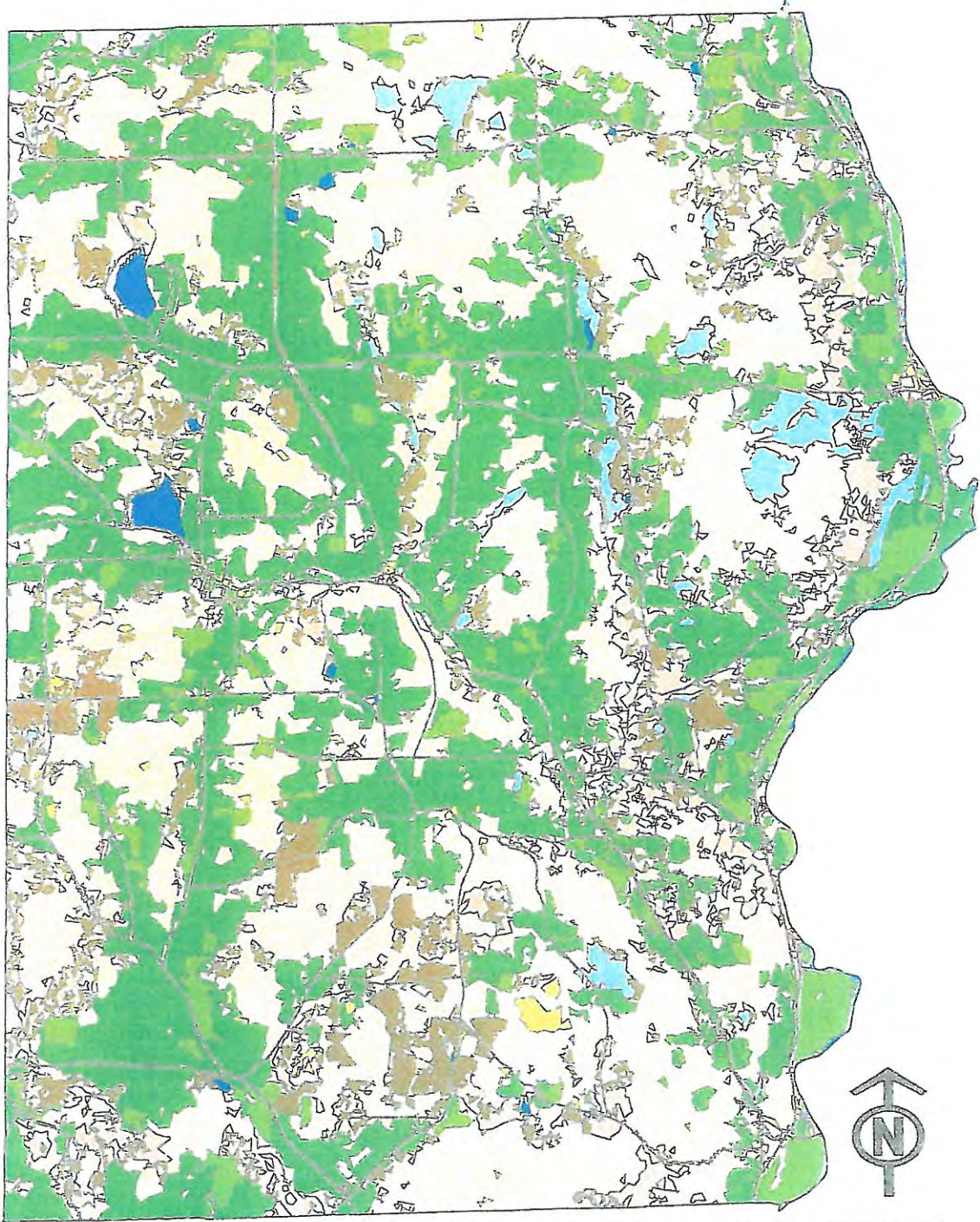


Appendix B. Maps # 1-16















Guilford Land Use 2010

Map # 1



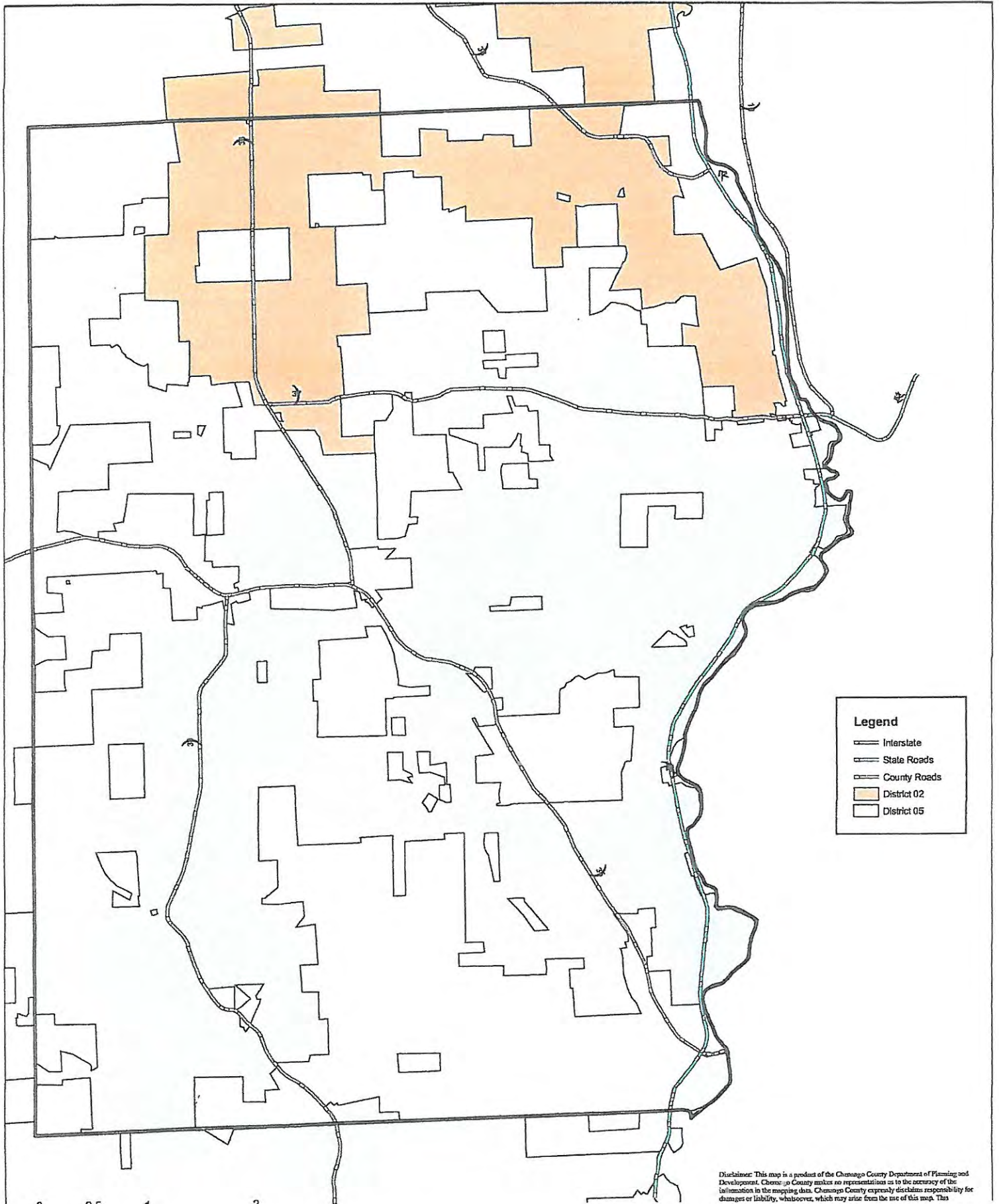
Guilford

LandUse

 Open Water 0.7%	 Developed, High Intensity 0.06%
 Emergent Herbaceous Wetlands 0.08%	 Deciduous Forest 41.23%
 Woody Wetlands 2.46%	 Mixed Forest 8.79%
 Developed, Open Space 2.32%	 Evergreen Forest 6.2%
 Developed, Low Intensity 0.3%	 Grassland/Herbaceous 0.98%
 Developed Medium Intensity 0.03%	 Cultivated Crops 5.03%
	 Pasture/Hay 31.25%
	 Shrub/Scrub 0.56%

Town of Guilford Agricultural Districts

Map # 2

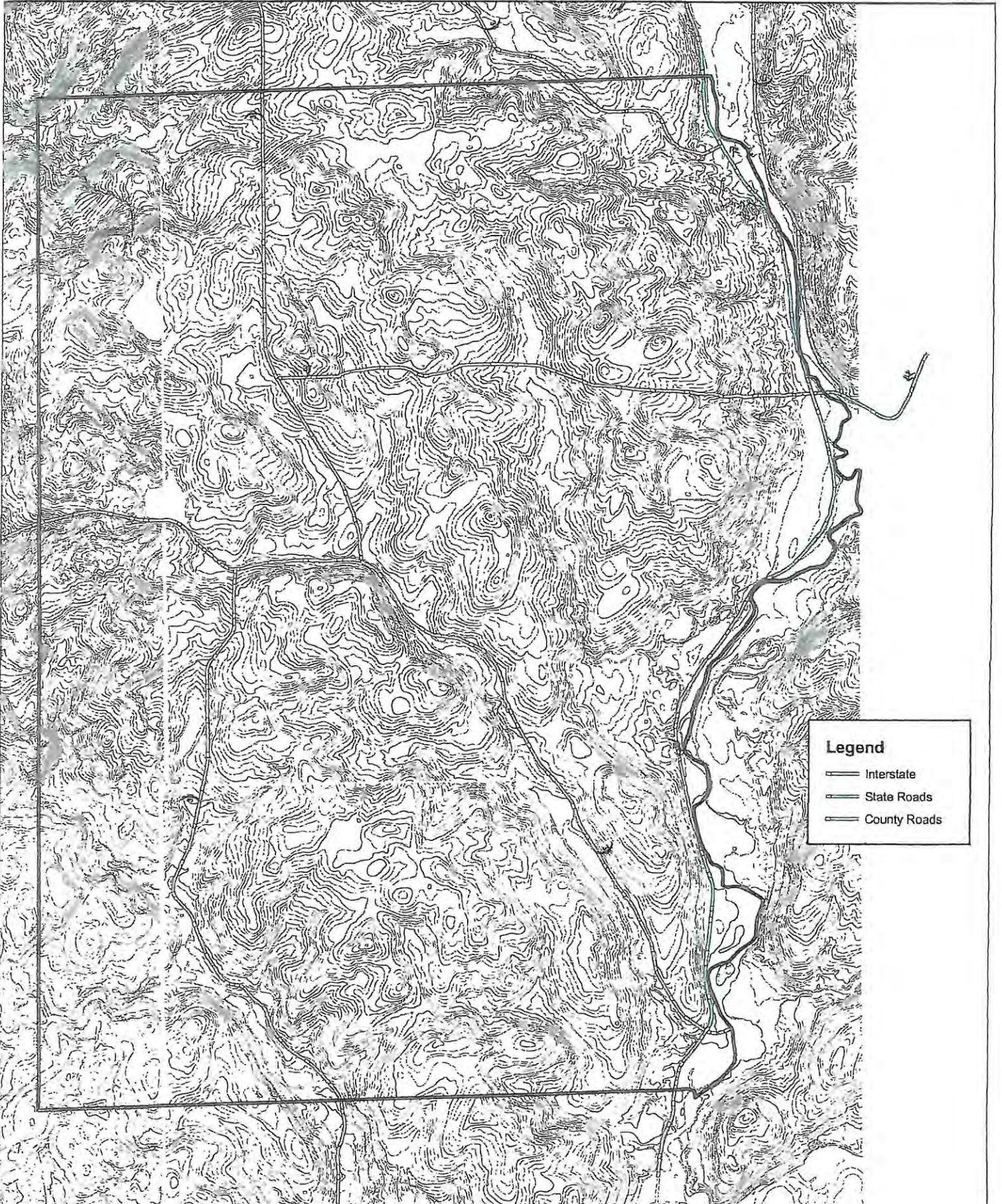


Disclaimer: This map is a product of the Champaign County Department of Planning and Development. Champaign County makes no representation as to the accuracy of the information in the mapping data. Champaign County expressly disclaims responsibility for damages or liability, whatsoever, which may arise from the use of this map. This

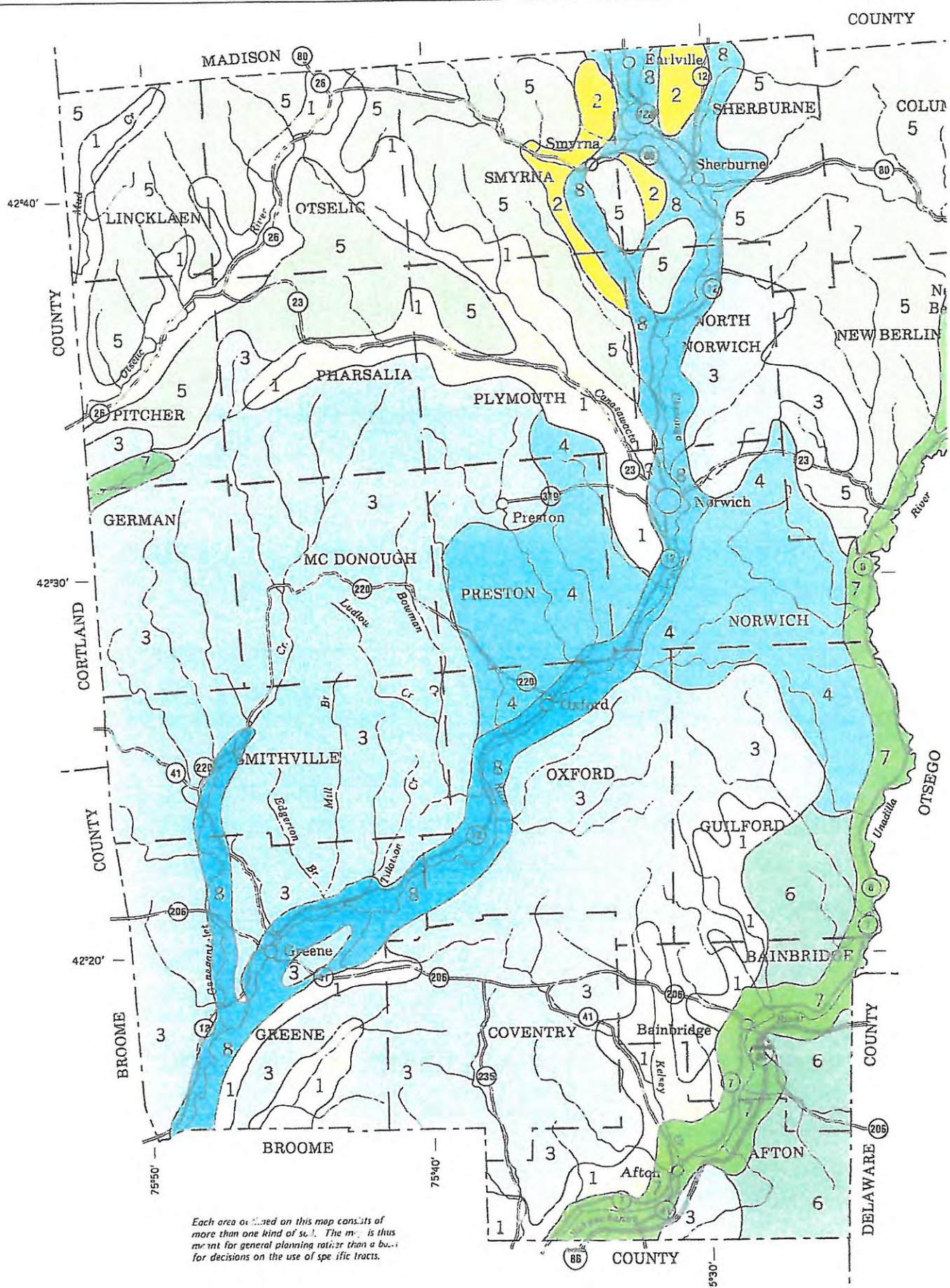
Town of Guilford Topography

Map # 3

0 0.5 1 2 Miles



Map # 5



Each area outlined on this map consists of more than one kind of soil. The map is thus meant for general planning rather than a basis for decisions on the use of specific tracts.

PRIME FARMLAND

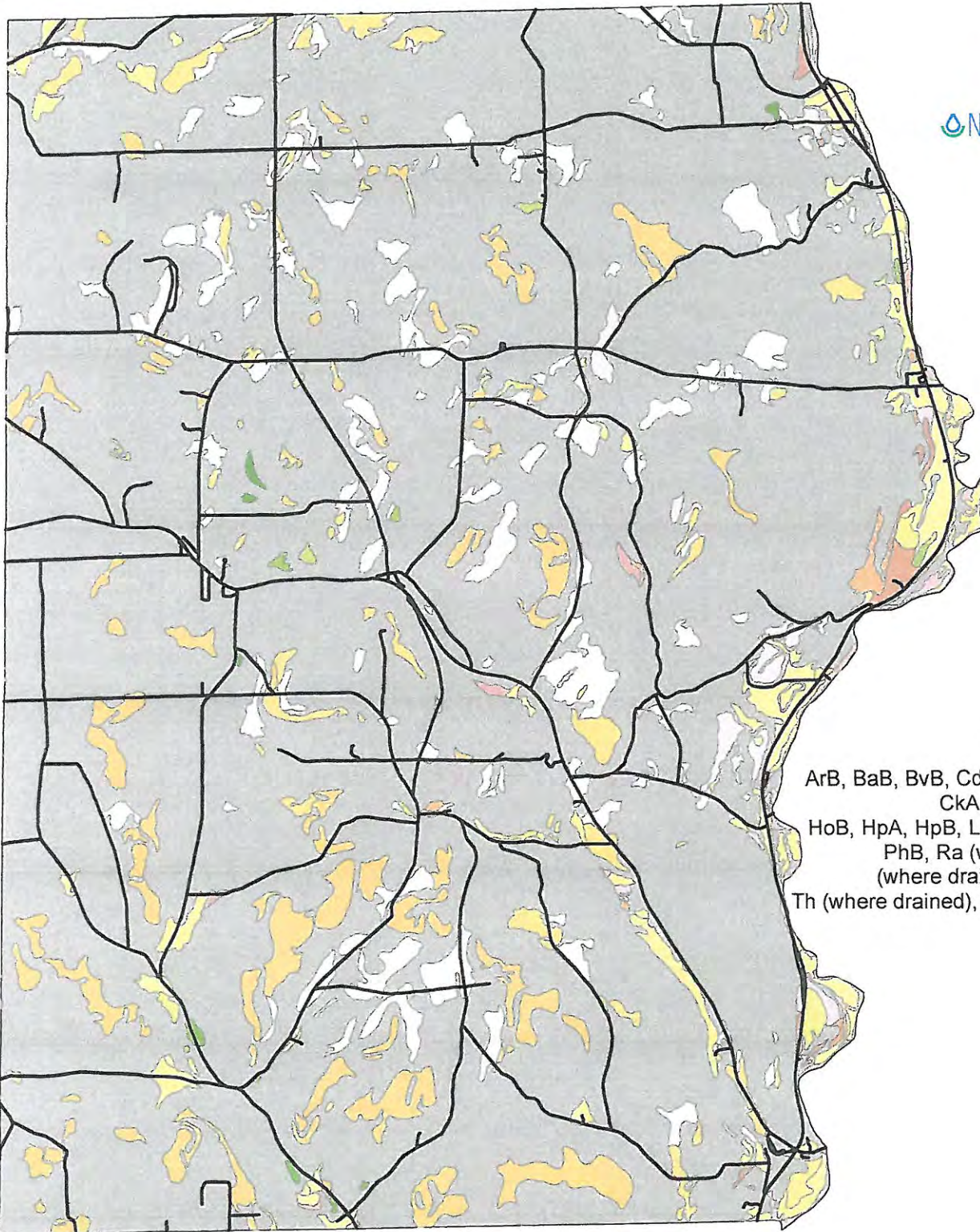
Town of Guilford, Chenango County

New York

Map # 6



0 1 2 Miles



Soil Types include:

ArB, BaB, BvB, CdA, CdB, ChA, ChB,
CkA, CkB, Ha, Hb, HoA,
HoB, HpA, HpB, LaB, LnB, LoB, PhA,
PhB, Ra (where drained), Re
(where drained), RhB, ScA, Te,
Th (where drained), Tr, UnA, VaB, WeB

Only the soils considered prime farmland are listed. Urban or built-up areas of the soils listed are not considered prime farmland. If a soil is prime farmland only under certain conditions, the conditions are specified in parentheses after the soil name.

**SOILS OF STATEWIDE IMPORTANCE
Town of Guilford, Chenango County
New York**

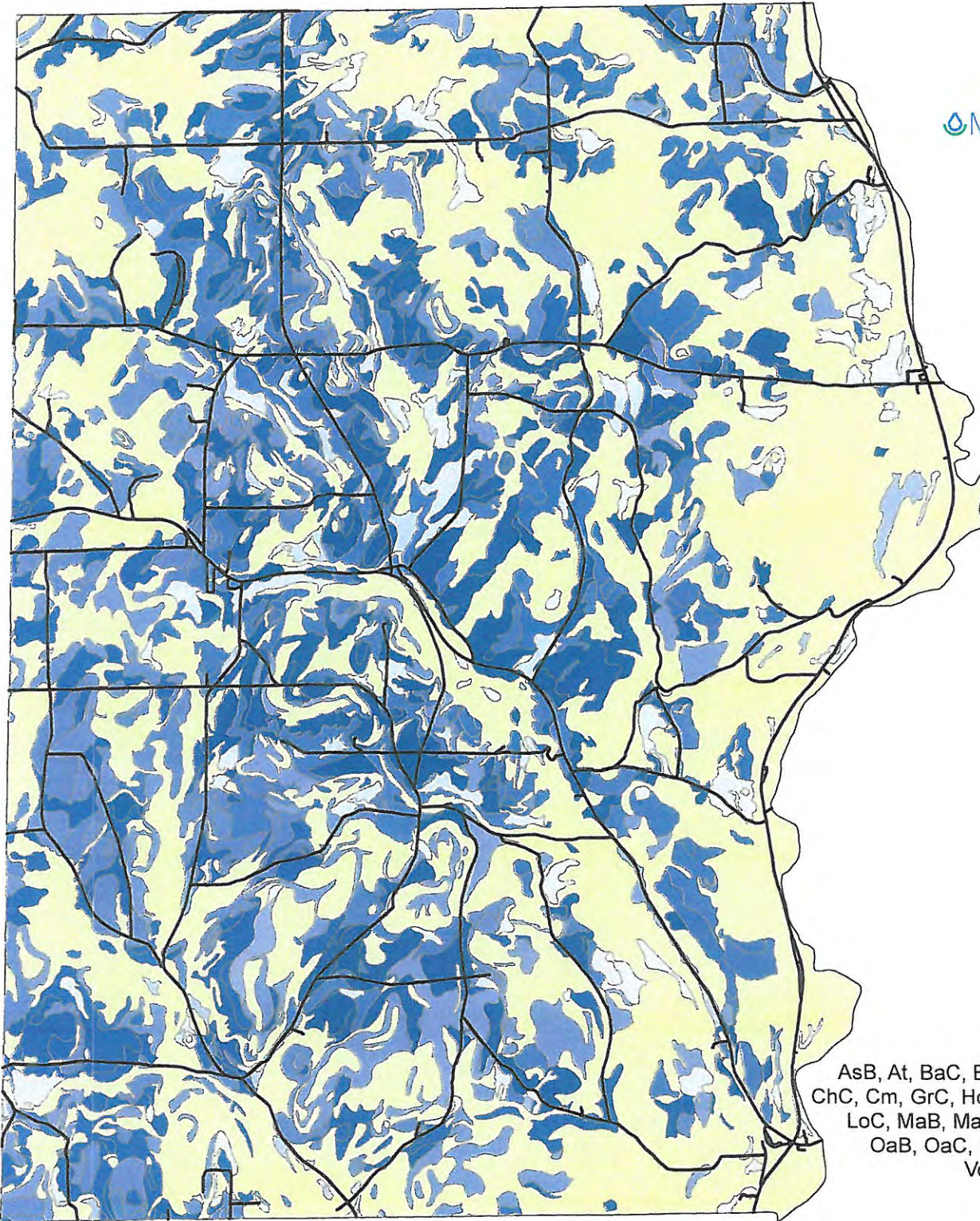
Map #7



0 1 2
Miles



NRCS Natural Resources
Conservation Service

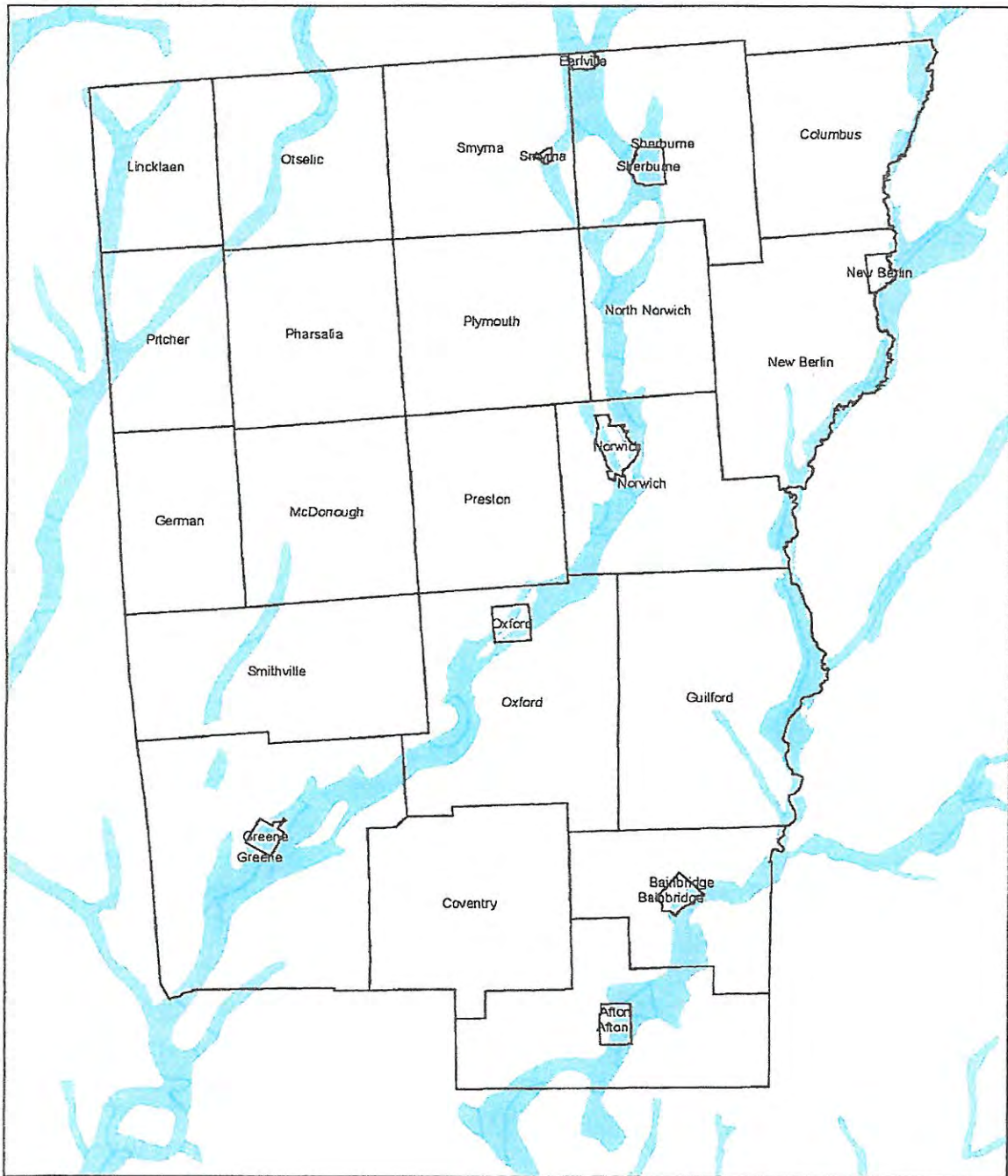


Soil Types include:

AsB, At, BaC, BvC, Ca, CbB, CbC,
ChC, Cm, GrC, HoC, HpC, LaC, LnC,
LoC, MaB, MaC, MoA, MoB, MoC,
OaB, OaC, RhC, Tu, VaC, VoA,
VoB, VoC, WeB, WeC

Farmlands of statewide importance include those soils in land capability Class II and III that do not meet the criteria as Prime Farmland, These soils are nearly Prime Farmland and economically produce high yields of crops when treated and managed according to acceptable farming methods, Some may produce yields as high as Prime Farmland if conditions are favorable.

Primary and Principal Aquifers Chenango County, NY

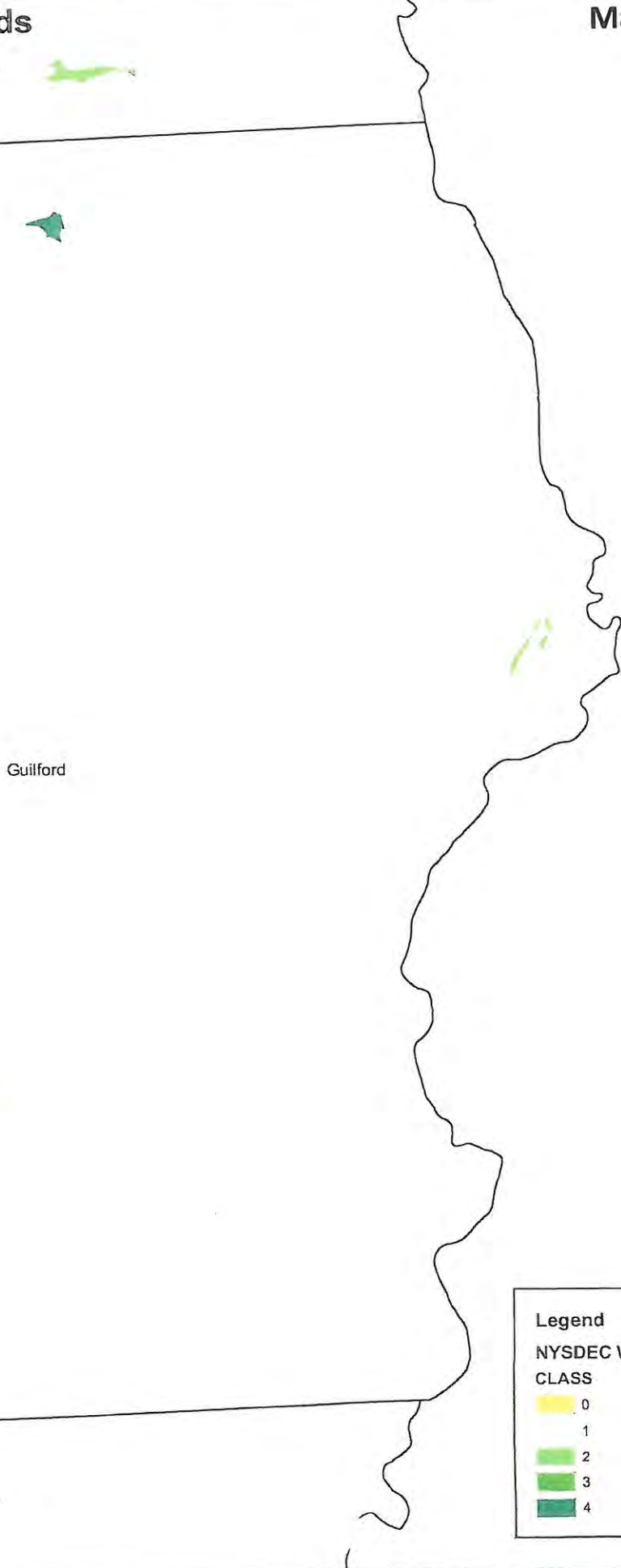


This map is a product of the Chenango County Department of Planning and Development. Chenango County does not warrant the accuracy or completeness of the information shown on this map. Chenango County is not responsible for any errors or omissions of liability, whether public or private, that may result from the use of this map. The information shown on this map is for informational purposes only. Chenango County does not warrant the accuracy or completeness of the information shown on this map.

NYSDEC Fresh Water Wetlands Guilford, NY

Map# 9

Norwich



Guilford

Oxford

Bainbridge

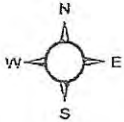
Legend
NYSDEC Wetlands
CLASS

0	Yellow
1	Light Green
2	Medium Green
3	Dark Green
4	Very Dark Green

Disclaimer: This map is a product of the Chenango County Department of Planning and Development. Chenango County makes no representations as to the accuracy of the information on the mapping data. Chenango County expressly disclaims responsibility for damages or liability, whatsoever, which may arise from the use of this map. This document may not be reproduced without written consent from the Chenango County Department of Planning and Development.

Guilford Lake Watershed Boundary

USGS 7.5 Minute Series TOPOGRAPHIC MAP



Legend

watershed_boundary

Topographic Map.sid

RGB

- Red: Band_1
- Green: Band_2
- Blue: Band_3

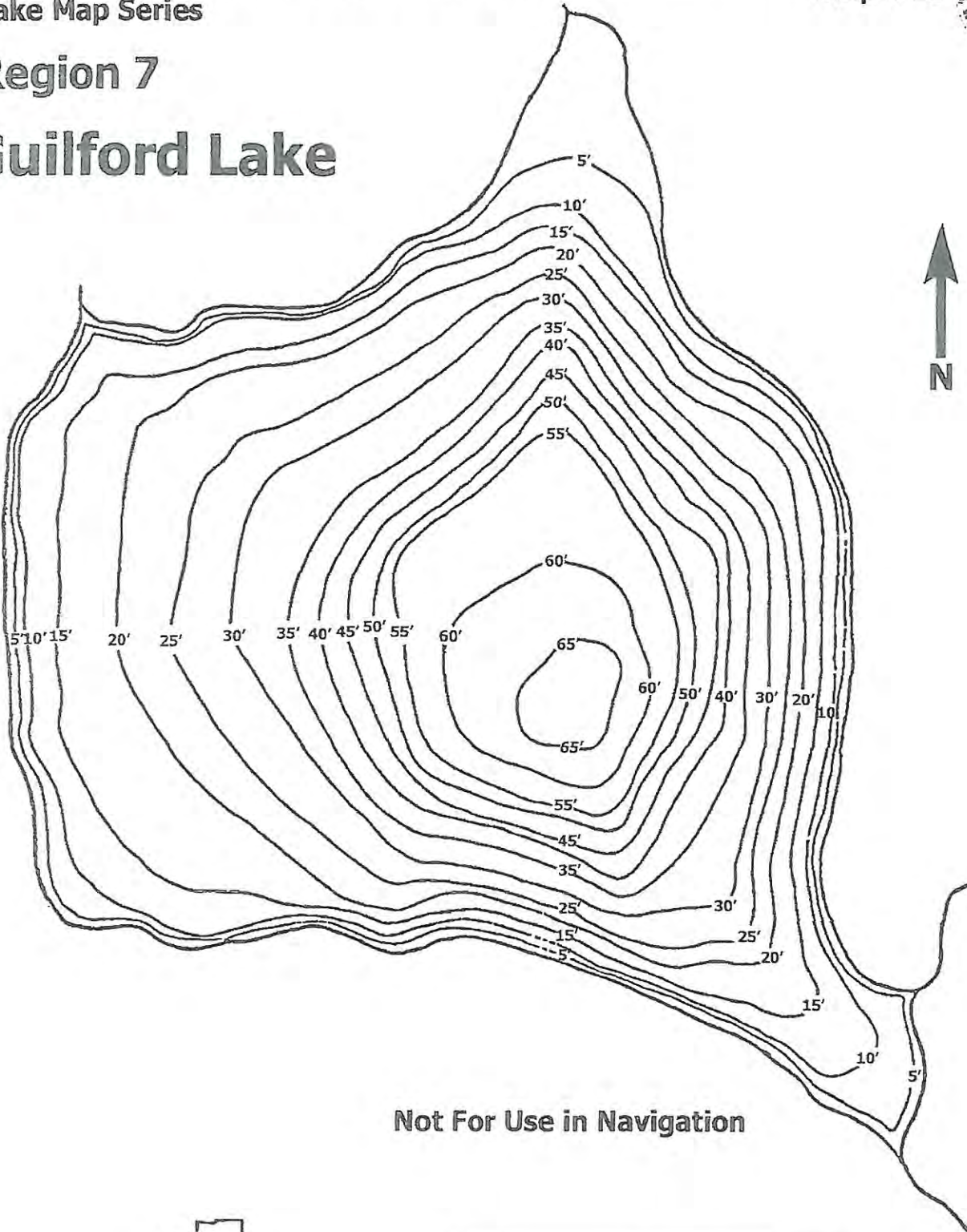


TOTAL ESTIMATED WATERSHED SIZE: 1,423 acres



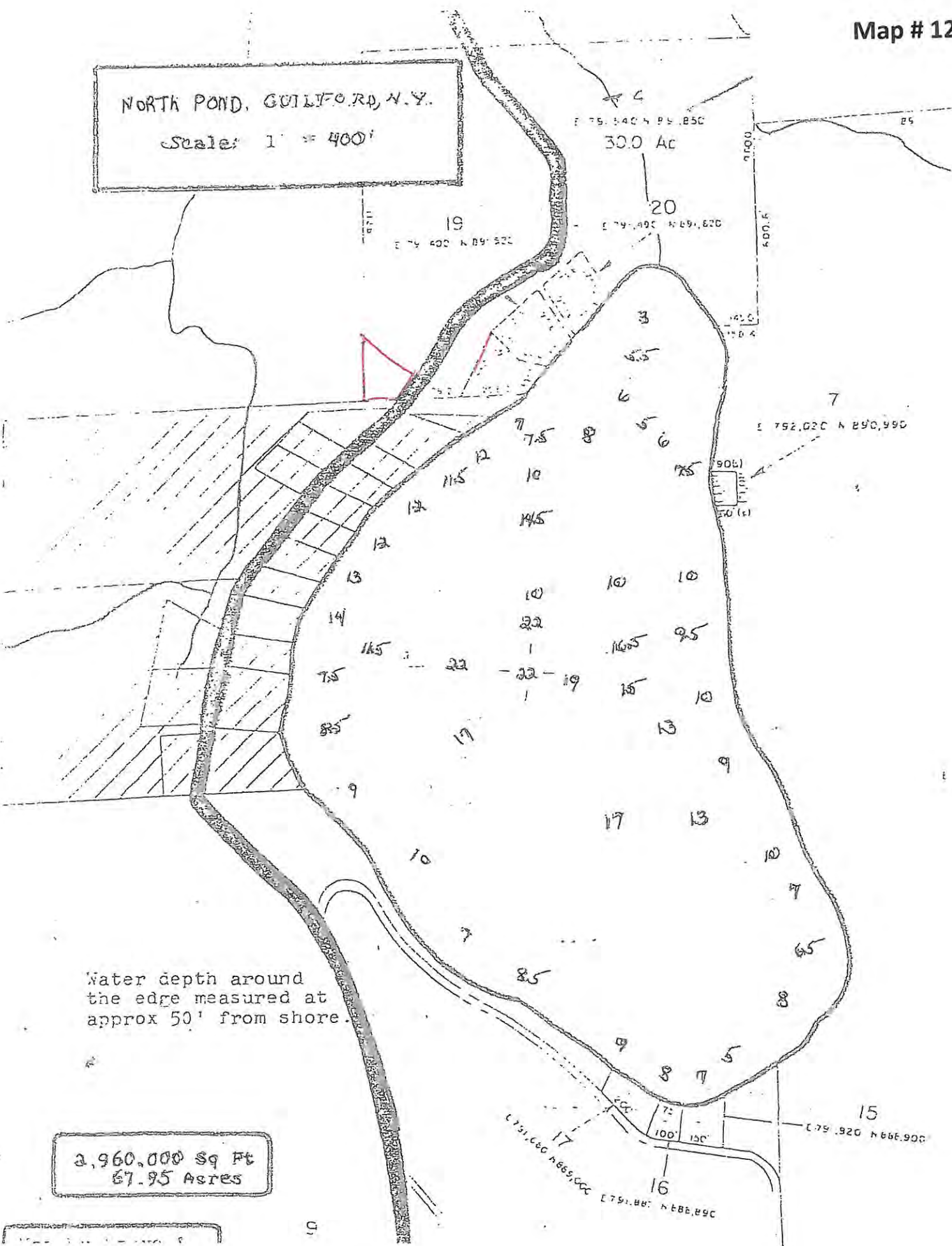
Region 7

Guilford Lake



Guilford Lake	
County: Chenango	Town: Guilford
Surface Area: 80 Acres	
Fish Species Present: Largemouth Bass, Smallmouth Bass	

NORTH POND, GUILFORD, N.Y.
Scale: 1" = 400'

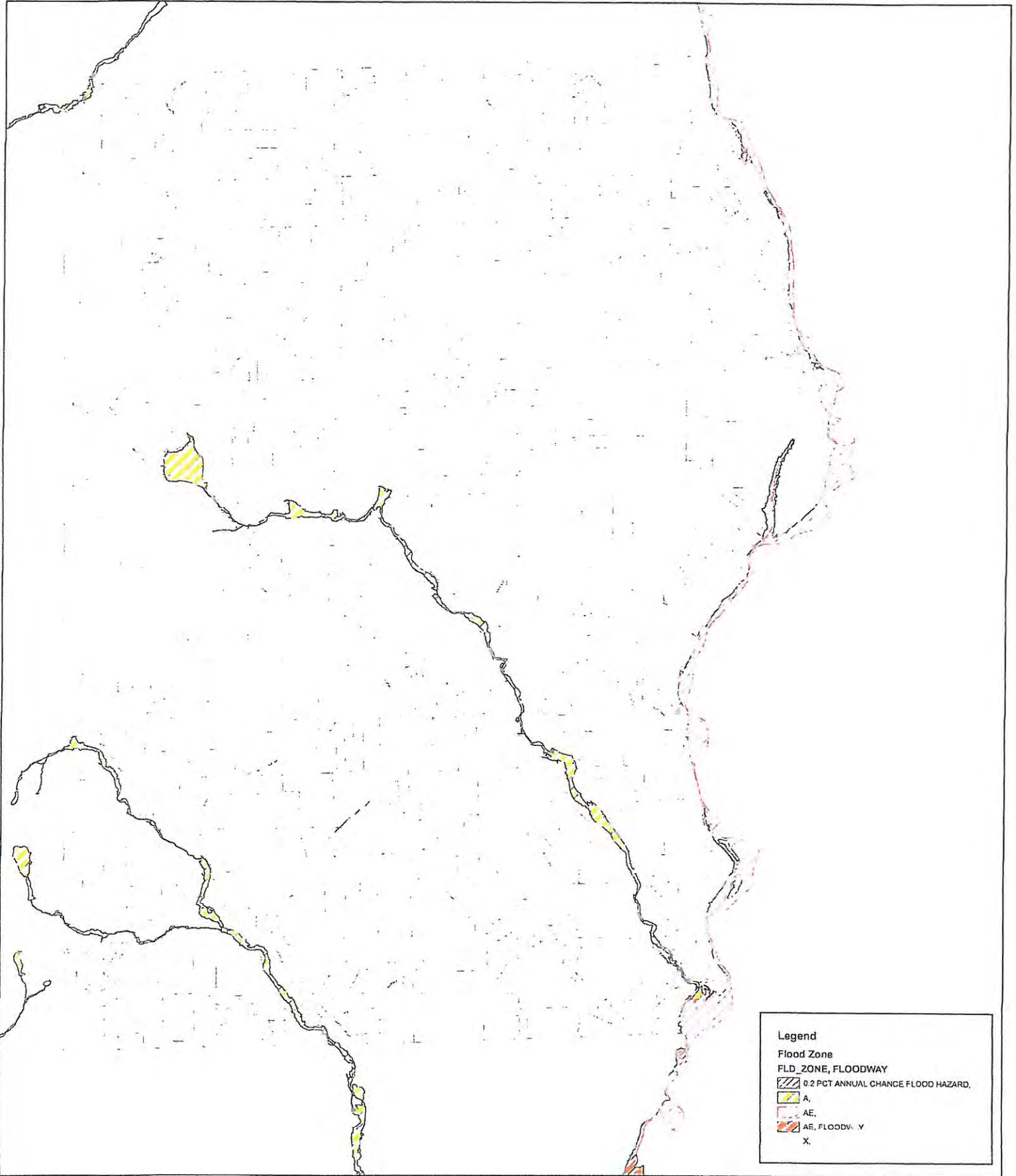
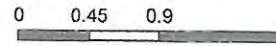


Water depth around the edge measured at approx 50' from shore.

2,960,000 Sq Ft
67.95 Acres

FEMA Flood Zones Guilford, NY

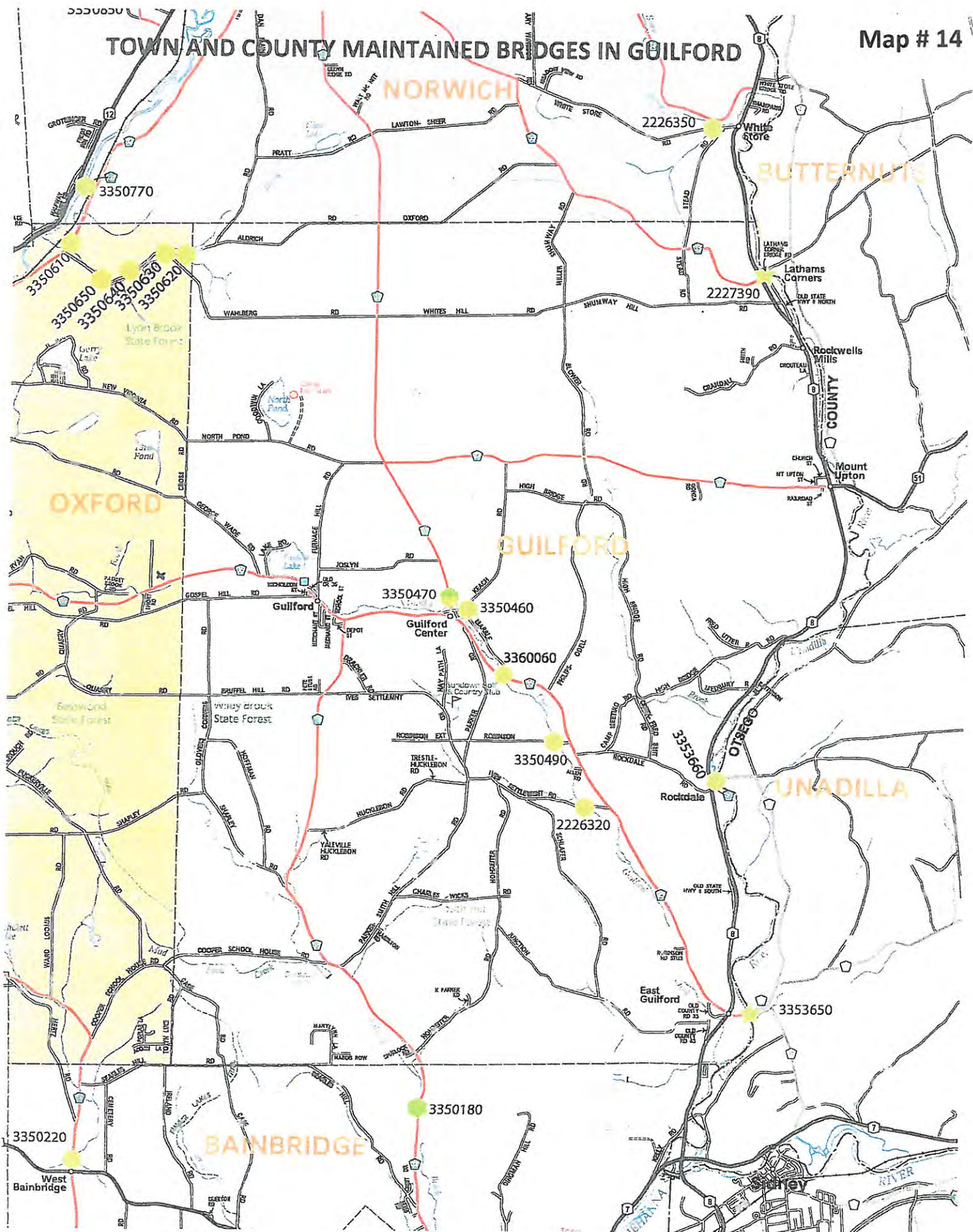
Map # 13

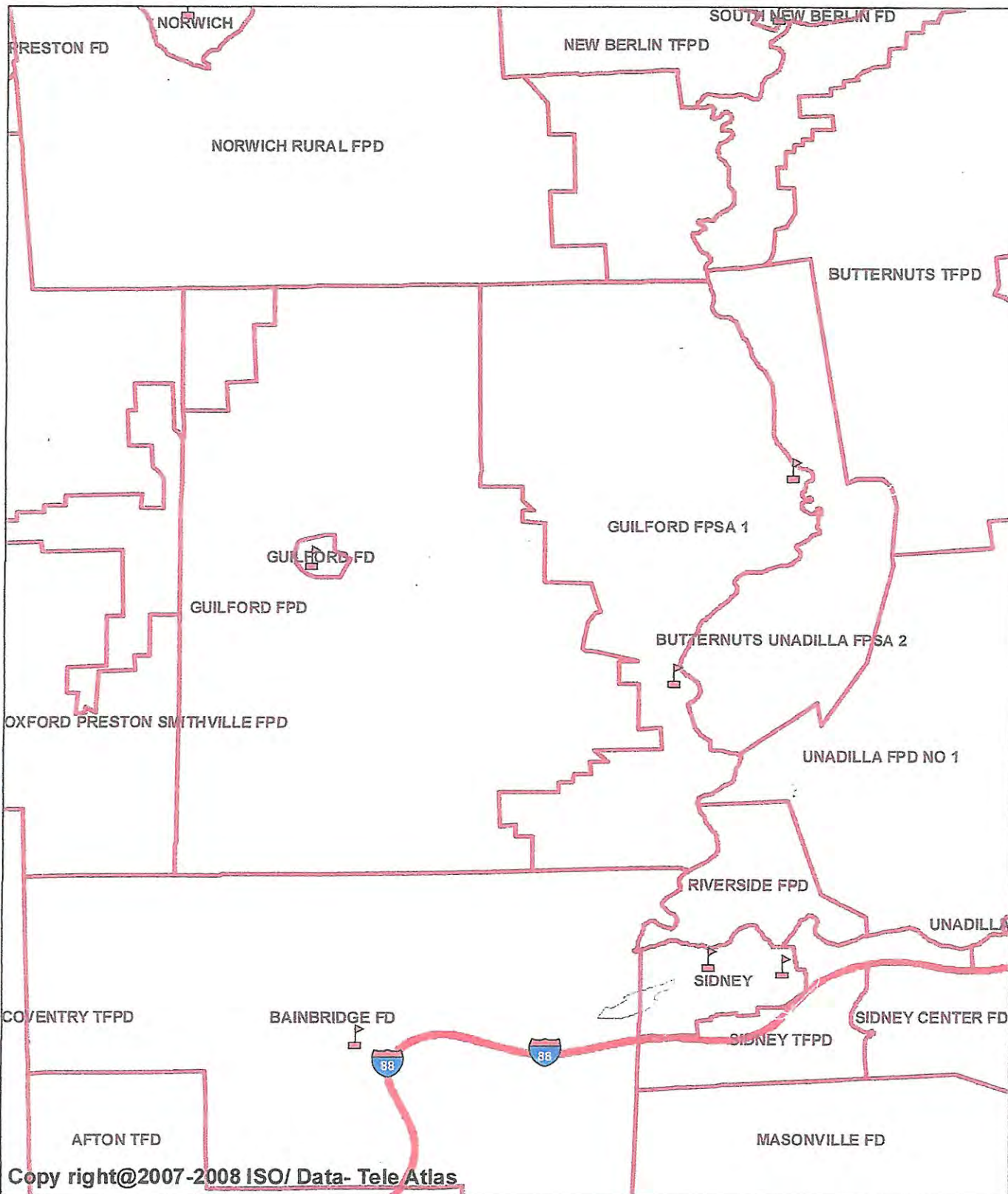


This notice: This map is a product of the Chenango County Department of Planning and Development. Chenango County makes no representations as to the accuracy of the information or the mapping data. Chenango County expressly disclaims responsibility for damage, or liability, whatsoever, which may arise from the use of this map. This document may not be reproduced without written consent from the Chenango County Department of Planning and Development.

TOWN AND COUNTY MAINTAINED BRIDGES IN GUILFORD

Map # 14



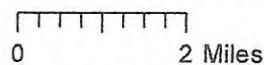


Map Printed On Date : 12/28/2011

Copy right@2007-2008 ISO/ Data- Tele Atlas

Legend

- | | | | |
|---------------------------|----------------------|-------------------|----------------|
| ISO Commercial Properties | | Water Supply Area | Supply |
| NFF | Fire Station | | Creditable |
| 4000 + gpm | Fire Protection Area | | Non-Creditable |
| 3000 - 3500 gpm | | | |
| 1250 - 2500 gpm | | | |
| 0 - 1000 gpm | | | |



Minimum Coordinates: X -75.61823 , Y 42.28326
 Maximum Coordinates: X -75.27423 , Y 42.50510

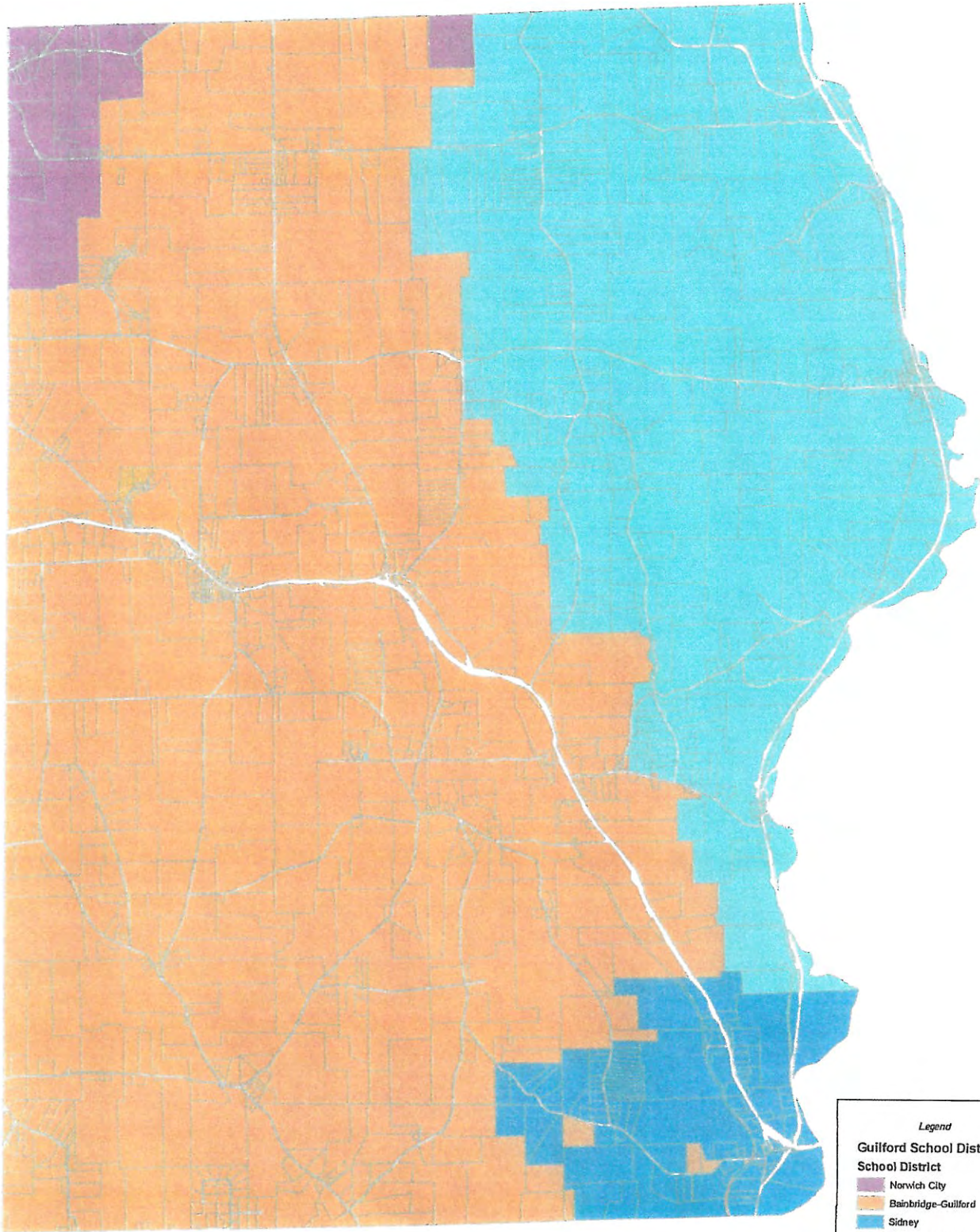
Please mail the corrected map to:

ISO
 Community Hazard Mitigation Division
 4B Eves Drive, Suite 100
 Marlton, NJ 08053-3112



Town of Guilford School Districts

3



Legend

Guilford School Districts

School District

- Norwich City
- Bainbridge-Guilford
- Sidney
- Gilbertville-MLUpton
- Guilford parcels

1:70,000

1. This map is a digital map of the Town of Guilford, Vermont. It is not a legal document. It is intended for informational purposes only. The Town of Guilford is not responsible for any errors or omissions on this map. The Town of Guilford is not responsible for any damages or losses resulting from the use of this map. The Town of Guilford is not responsible for any claims or liabilities resulting from the use of this map. The Town of Guilford is not responsible for any claims or liabilities resulting from the use of this map.